



LOOKBOOK

LABORATORY FURNITURE

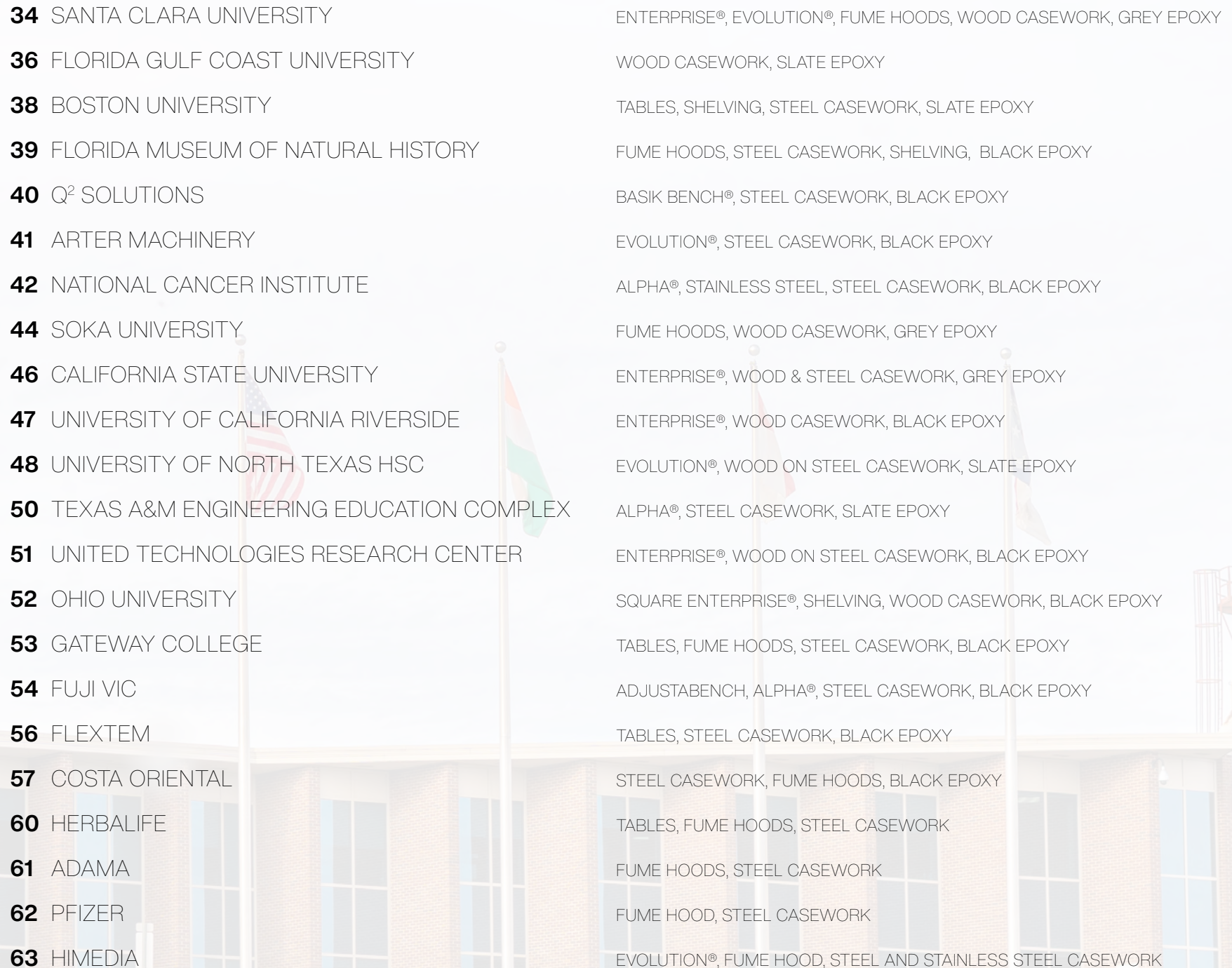




encouraging new discovery ...*Worldwide*



8	CALIFORNIA INSTITUTE OF TECHNOLOGY	FUME HOODS, WOOD CASEWORK
10	TEXAS A&M ILSQ	FUME HOODS, STEEL CASEWORK, GREY EPOXY
11	UNIVERSITY OF NORTH TEXAS DISCOVERY PARK	EVOLUTION®, FUME HOODS, WOOD-ON-STEEL CASEWORK, SLATE EPOXY
13	UT SAN ANTONIO BARSHOP INSTITUTE	EVOLUTION®, FUME HOODS, STEEL CASEWORK, GREY EPOXY
14	CAPE COD COMMUNITY COLLEGE	WOOD-ON-STEEL CASEWORK, GREY EPOXY
15	UNIVERSITY OF CENTRAL MISSOURI	WOOD TABLES, WOOD CASEWORK, BLACK EPOXY
16	WAYNE STATE UNIVERSITY	ENTERPRISE®, FUME HOODS, STEEL CASEWORK
18	UNIVERSITY OF KANSAS MEDICAL CENTER	WOOD CASEWORK, BLACK EPOXY
19	BOYTON YARDS	EVOLUTION®, STEEL CASEWORK, GREY EPOXY
20	AUGUSTA UNIVERSITY COLLEGE OF SCI AND MATH	TABLES, TEACHING HOODS, STEEL AND WOOD CASEWORK, GREY EPOXY
22	GEORGIA COLLEGE & STATE UNIVERSITY	ENTERPRISE®, TEACHING HOOD, STAINLESS, WOOD CASEWORK, GREY EPOXY
24	MISSISSIPPI STATE UNIVERSITY ENGINEERING	ENTERPRISE®, TEACHING HOOD, WOOD CASEWORK, BLACK EPOXY
26	NORTH CAROLINA A&T STATE UNIVERSITY	ENTERPRISE®, FUME HOODS, STEEL CASEWORK, BLACK EPOXY
27	ONEIDA COUNRY WATER TREATMENT PLANT	FUME HOODS, STEEL CASEWORK, SHELVING, SLATE EPOXY
28	UNC CHARLOTTE	ENTERPRISE®, TEACHING TABLES, FUME HOODS, WOOD CASEWORK, SLATE EPOXY
30	CAL LUTHERAN SWENSON SCIENCE CENTER	ENTERPRISE®, TEACHING HOODS, WOOD CASEWORK, SLATE EPOXY
32	UC IRVINE CENTER	ENTERPRISE®, FUME HOODS, STEEL CASEWORK, BLACK EPOXY
33	UNIVERSITY OF MARYLAND	ENTERPRISE®, SUSPENDED WOOD-ON-STEEL CASEWORK, GREY EPOXY
4	KEWAUNEE FACTORY	
6	DEALER SERVICE	
58	KSC INTERNATIONAL	
64	EPOXY COLORS	
65	METAL COLORS	
66	WOOD COLORS	



34 SANTA CLARA UNIVERSITY	ENTERPRISE®, EVOLUTION®, FUME HOODS, WOOD CASEWORK, GREY EPOXY
36 FLORIDA GULF COAST UNIVERSITY	WOOD CASEWORK, SLATE EPOXY
38 BOSTON UNIVERSITY	TABLES, SHELVING, STEEL CASEWORK, SLATE EPOXY
39 FLORIDA MUSEUM OF NATURAL HISTORY	FUME HOODS, STEEL CASEWORK, SHELVING, BLACK EPOXY
40 Q ² SOLUTIONS	BASIK BENCH®, STEEL CASEWORK, BLACK EPOXY
41 ARTER MACHINERY	EVOLUTION®, STEEL CASEWORK, BLACK EPOXY
42 NATIONAL CANCER INSTITUTE	ALPHA®, STAINLESS STEEL, STEEL CASEWORK, BLACK EPOXY
44 SOKA UNIVERSITY	FUME HOODS, WOOD CASEWORK, GREY EPOXY
46 CALIFORNIA STATE UNIVERSITY	ENTERPRISE®, WOOD & STEEL CASEWORK, GREY EPOXY
47 UNIVERSITY OF CALIFORNIA RIVERSIDE	ENTERPRISE®, WOOD CASEWORK, BLACK EPOXY
48 UNIVERSITY OF NORTH TEXAS HSC	EVOLUTION®, WOOD ON STEEL CASEWORK, SLATE EPOXY
50 TEXAS A&M ENGINEERING EDUCATION COMPLEX	ALPHA®, STEEL CASEWORK, SLATE EPOXY
51 UNITED TECHNOLOGIES RESEARCH CENTER	ENTERPRISE®, WOOD ON STEEL CASEWORK, BLACK EPOXY
52 OHIO UNIVERSITY	SQUARE ENTERPRISE®, SHELVING, WOOD CASEWORK, BLACK EPOXY
53 GATEWAY COLLEGE	TABLES, FUME HOODS, STEEL CASEWORK, BLACK EPOXY
54 FUJI VIC	ADJUSTABENCH, ALPHA®, STEEL CASEWORK, BLACK EPOXY
56 FLEXTM	TABLES, STEEL CASEWORK, BLACK EPOXY
57 COSTA ORIENTAL	STEEL CASEWORK, FUME HOODS, BLACK EPOXY
60 HERBALIFE	TABLES, FUME HOODS, STEEL CASEWORK
61 ADAMA	FUME HOODS, STEEL CASEWORK
62 PFIZER	FUME HOOD, STEEL CASEWORK
63 HIMEDIA	EVOLUTION®, FUME HOOD, STEEL AND STAINLESS STEEL CASEWORK



Key End-Use Markets

North America
Latin & South America
India
Middle East
ASEAN

Kewaunee is a leading global designer, manufacturer, and installer of specialized equipment and technical furniture products for laboratories across an array of industries, including life sciences, education, government, healthcare, and general research end-markets. Kewaunee collaborates with the leading industry bodies and organizations to establish product standards that drive the safety, quality and performance that our customers expect from their laboratory furniture.

- Founded in 1906
- NASDAQ KEQU Public Corporation
- Only place in the world that manufactures Wood, Metal and Resin laboratory furniture on one site.
- Market leader in India and Middle East
- Headquarters & Domestic Manufacturing: Statesville, N.C.
- International Manufacturing Facilities: Bangalore, India
- International Sales Offices: Singapore, India, and Saudi Arabia

- Wood Manufacturing Plant 139,000 sq. ft.
- Steel Manufacturing Plant 159,800 sq. ft.
- Resin Manufacturing Plant 64,000 sq. ft.
- Offices 43,200 sq. ft.
- Distribution Center 1 100,000 sq. ft.
- Distribution Center 2 100,000 sq. ft.
- Domestic Associates: 600+
- International Associates: 350+



PHARMACEUTICALS



BIOTECHNOLOGY



CHEMICAL



PETROLEUM



ELECTRONICS



HEALTHCARE



EDUCATION



FOOD & BEVERAGE



FRAGRANCE



MARINE RESEARCH



DEFENSE



FORENSICS

COME VISIT US



LABORATORY FURNITURE AND INSTALLATION SERVICE

HOW CAN OUR PARTNERS BENEFIT YOUR PROJECT?

These affiliated dealers and distributors are leaders in their region with the experience and capacity to serve their customers with excellence. Working directly with a Kewaunee partner in your region has several advantages.

LOCAL KNOWLEDGE:

You will be connected with a local team that understands the processes and restrictions specific to your area. This allows you to navigate your design and construction process more efficiently.

LOCAL SUPPORT TEAMS:

Working directly with a local team provides enhanced access to hands-on support, whether that is visiting a similar job site during the planning stages of your project, or the need for someone to be onsite quickly during your construction phase. Local partners can provide that level of personalized support.

TAILORED SOLUTIONS:

Many of Kewaunee's partners provide specialized services to support your project from inception to completion. Depending on your region, these services can include everything from equipment and process validation to engineering, lab planning, and even architectural services.

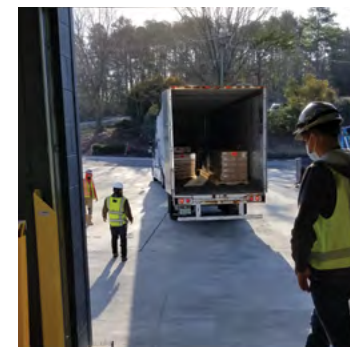
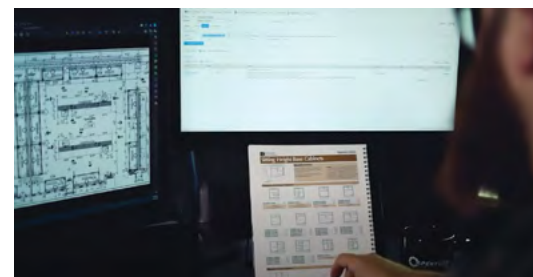
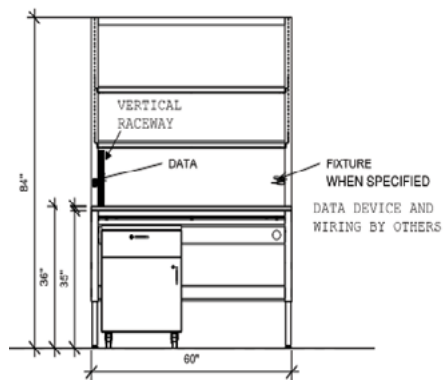
CERTIFICATION ASSISTANCE:

Our local partners can often coordinate with contractors and other design professionals during your construction process to provide an early and simplified pathway to the certifications you require.

Working directly with a Kewaunee dealer provides an experience customized to your needs, with the backing of the largest scientific laboratory manufacturer in the US. Many of our partners have long-standing ties with Kewaunee, and all are carefully vetted to ensure they are up to our standards. They understand the importance of delivering quality projects with superior service.

When you connect with a Kewaunee dealer or distributor, you are selecting an expert team that continues to receive the training and firsthand knowledge that, in turn, provides an intimate understanding of our manufacturing schedule, capacity, and unique product offerings. The ability to deliver detailed lead times and design options provides the support your team requires to plan and complete your projects on your timeline.









CALIFORNIA INSTITUTE OF TECHNOLOGY

CHEN NEUROSCIENCE RESEARCH BUILDING

PASADENA, CALIFORNIA

ISEC

This Caltech lab won the Award for Excellence in Innovation, Lab Design Excellence from Lab Manager in 2022. The lab provides plenty of workspace with rows of pre-wired and adjustable Enterprise® workbenches topped with heat and chemical-resistant gray resin tops. Each row is capped with Signature Series full-overlay style wood cabinets with matching gray Kemresin sinks and surfaces. Blue panels provide a pop of color to the room, and stainless-steel peg board drying racks are positioned throughout the space, providing ease and functionality for drying utensils and keeping workstations clean. Venturi® fume hoods are positioned for optimal usability while adding light to the space, keeping the design bright and open





TEXAS A&M UNIVERSITY

INSTRUCTIONAL LABORATORY & INNOVATIVE LEARNING BUILDING

COLLEGE STATION, TX

HALLMARK CASEWORK

Supreme Air Venturi® fume hoods line the outside of the lab space, topped with acorn exhaust fittings. Islands are built using fixed steel casework with a mixture of sink and apron end caps. These islands create extra workspaces for experiments while reducing the traffic walking in front of the fume hoods, increasing airflow efficiency.

UNIVERSITY OF NORTH TEXAS

DISCOVERY PARK BIOMEDICAL RESEARCH EXPANSION

DENTON, TX

HALLMARK CASEWORK

Supreme Air Venturi® fume hoods are the center point of this laboratory. Islands are built using fixed steel casework with sinks for use adjacent to each hood. Evolution® bench systems create flexible, robust workstations that provide a large work surface and clear view. This lab features a mixture of fixed and mobile wood-on-steel casework that matches the veneer of the laboratory doors. A seamless ADA area is created by using Supreme Air Venturi® ADA and general-purpose fume hoods, which share the same height and sight line.







UNIVERSITY OF TEXAS SAN ANTONIO

**SAM AND ANN BARSHOP
INSTITUTE FOR LONGEVITY AND AGING STUDIES**

SAN ANTONIO, TX
HALLMARK CASEWORK

Multiple rooms are outfitted with Kewaunee products customized to each unique space. Flexible areas use Evolution® workbenches with mobile wood-on-steel cabinets, which have their own Kemresin® epoxy worktop, making them ideal for extra work surfaces when needed. On the outer walls, fixed wood-on-steel casework house sinks, and epoxy peg boards are surrounded by wall shelving and lab benches. Back-to-back Supreme Air Venturi® fume hoods in powder coated and stainless steel sit on top of steel ventilated cabinets with sink end caps.

CAPE COD COMMUNITY COLLEGE

FRANK & MAUREEN WILKENS SCIENCE & ENGINEERING CENTER

BARNSTABLE, MA

LAB FURNITURE INSTALLATIONS AND SALES

This classroom incorporates Kewaunee's Research Collection wood-on-steel full-overlay style cabinets and tall storage cabinets. Students have the option to work at fixed height student workstations with Kemresin® epoxy work surfaces and drop-in sinks. Quality details include vertical grain matching fronts with select Grade AA veneers.



UNIVERSITY OF CENTRAL MISSOURI

WARRENBURG, MO

INNOVATIVE LABORATORY SYSTEMS

Signature Series full-overlay style cabinets with stainless steel wire pulls are enhanced by a pop of color, bringing life and energy to this space. Mobile student tables provide additional flexibility for study and collaboration.



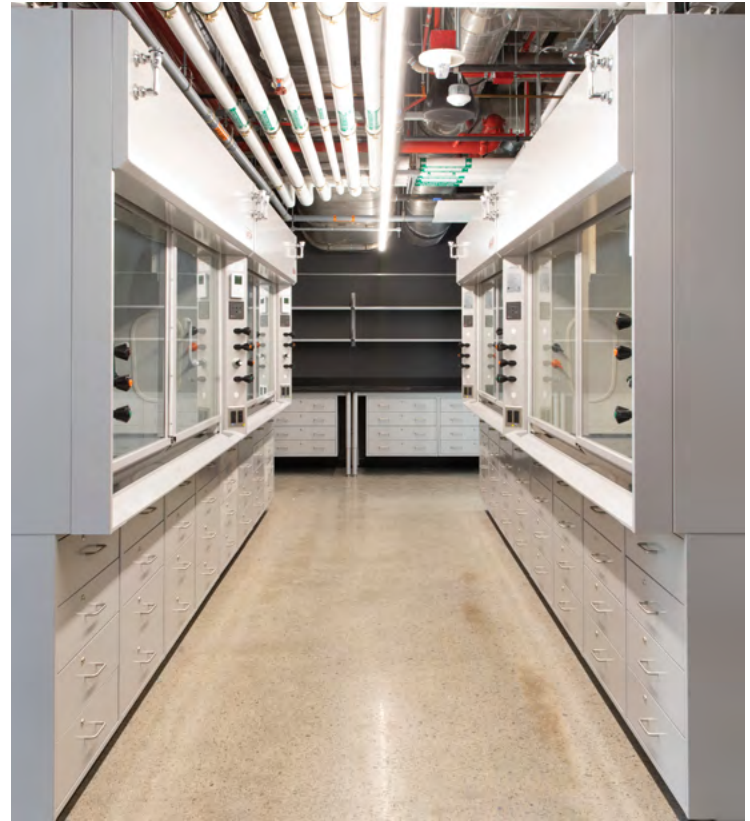
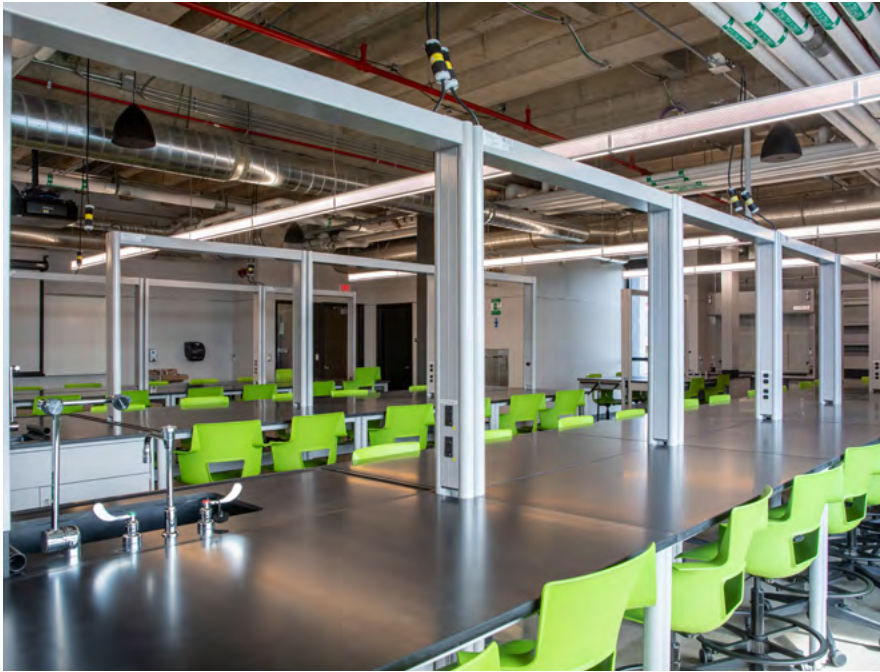


WAYNE STATE UNIVERSITY

DETROIT, MI

FARNELL EQUIPMENT COMPANY

In this laboratory, flexibility is key. Enterprise® bench systems are used in the center of the room and along the edges, keeping a consistent look with maximum storage while maintaining the ability to be moved in the future. Power runs from the walls and down into the benches with outlets integrated into the posts. Large Supreme Air Venturi® hoods with split sashes create an aisle way. ADA hoods sit next to general-purpose hoods sharing the same consistent sight line. Inset steel casework is also utilized.



UNIVERSITY OF KANSAS

MEDICAL CENTER

KANSAS CITY, KS

INNOVATIVE LABORATORY SOLUTIONS

Classic elegance with modern functionality. Fixed Signature Series wood cabinets with square aluminum pulls and black Kemresin® work surfaces and sinks bring warmth to the space while providing ample storage and functionality.





BOYNTON YARDS

SOMERVILLE LIFE SCIENCE LAB

SOMERVILLE, MA

LAB FURNITURE INSTALLATIONS AND SALES

This laboratory space has expansive views both inside and out. Utilizing Evolution® shelves that are infinitely adjustable to enhance storage and optimize space allowing the workspace below to be maximized and work surface clutter decreased. The Evolution® system's shelves and posts are ideal connection points to customize the bench and mount accessories to optimize the workbench. Additional mobile cabinets double as extra work surfaces.



AUGUSTA UNIVERSITY

COLLEGE OF SCIENCE
AND MATHEMATICS

AUGUSTA, GA

NYCOM INC



No windows? No problem. A mixture of colors and sight lines create an open and airy effect in this laboratory space. Snow White fixed steel casework, sat on top of a grey color-blocked floor, reduces shadows and contrast. This neutrality is further complimented by splashes of vivid color on the walls. Supreme Air TruView® teaching hoods increase sight lines across the room and bring an added layer of brightness to the space. Other areas of this expansive lab utilize a mixture of tables, fixed aprons, and teaching islands. Hidden storage is created in a nook by using sliding white boards mounted on fixed casework, camouflaging shelving and extra work surfaces.







GEORGIA COLLEGE & STATE UNIVERSITY

INTEGRATED SCIENCE COMPLEX

MILLEDGEVILLE, GA

NYCOM INC

This showroom laboratory is at street level with floor-to-ceiling glass. Keeping the space open and warm, Supreme Air TruView® teaching hoods allow light to reach further into the room and provide visibility outside. Signature Series full-overlay style wood cabinets with several different student station arrangements cover a variety of applications from experiments to research and study. Integrated electrical outlets and data service pedestals, Kemresin® epoxy work surfaces and sinks, and pegboard drying racks add to the functionality of this space.



MISSISSIPPI STATE UNIVERSITY

STARKVILLE, MS

NYCOM INC



Black Kemresin® epoxy resin worktops brighten the space while providing heat and chemical-resistant workspaces throughout. Enterprise® pre-wired and adjustable workbenches are nested over mobile Signature Series wood cabinets to provide ample work and storage areas, creating an open and customizable flow. Multiple Supreme Air TruView® teaching hood stations provide plenty of room for storage and continue a cohesive and open look throughout.



NORTH CAROLINA A&T STATE UNIVERSITY

ENGINEERING RESEARCH AND INNOVATION COMPLEX

GREENSBORO, NC

NYCOM INC

Created with the goal of nurturing and accelerating innovation and cutting-edge discoveries, learning and creativity are at the heart of this laboratory space. Enterprise® bench systems are available throughout the lab to support research and collaboration, and back-to-back Venturi fume hoods in True Blue stand ready for their next experiment.





ONEIDA COUNTY WATER TREATMENT PLANT

ONEIDA, NY
NYCOM INC

Inset steel cabinets in Mountain Blue with complimentary epoxy work surfaces provide a pop of color in this sleek space. Capabilities are expanded with a bench-mounted Supreme Air Venturi® fume hood with ceiling enclosure and Alpha® wall hanging systems that provide support for a broad combination of accessories.

UNC CHARLOTTE

PETERSON HALL OF SCIENCE

CHARLOTTE, NC

NYCOM INC

Student free-standing table assemblies topped with Kemresin® epoxy work surfaces create islands of collaborative space within this welcoming laboratory. This warm and inviting aesthetic is further enhanced with pops of color and Signature Series wood cabinets and multiple student tables. Experimentation is encouraged with several Supreme Air Venturi® fume hoods with ceiling enclosures.







CALIFORNIA LUTHERAN UNIVERSITY

SWENSON SCIENCE CENTER

THOUSAND OAKS, CA

An open line of sight and splashes of color keep this lab bright and functional. The slate-colored Kemresin® epoxy work surfaces and sinks compliment colorful walls to keep work areas light and open, and pre-wired Enterprise® tables and a combination of Signature Series stationary and mobile workstations maximize space and create a cohesive design with ample storage. Placed along the walls, Supreme Air Venturi® and TruView® teaching hoods continue the open aesthetic without diminishing the space's functionality.



UNIVERSITY OF CALIFORNIA IRVINE

INTERDISCIPLINARY SCIENCE & ENGINEERING BUILDING

IRVINE, CA

ISEC INC

This lab's color scheme provides a fresh and classic look. The bright white throughout the room keeps the area feeling open, while grey accents along the floors and walls and black epoxy resin surfaces provide a warm yet sleek look. Supreme Air Venturi® fume hoods and inset steel casework are placed along the walls of the room, capitalizing on the available space. Adjustable Enterprise® workstations are placed down the center of the room and are pre-wired with storage shelves above and steel casework below to provide functionality and additional storage space. Ceiling service panels keep everything looking fresh by organizing the wiring.





UNIVERSITY OF MARYLAND

JAMES CLARKE HALL

COLLEGE PARK, MD

ISEC INC

A bright and open feeling is in effect with the combination of floor-to-ceiling windows and the Snow White Enterprise® workbenches. A pop of color on the walls and floors adds warmth to the room. Suspended wood-on-steel casework provides additional warmth and plenty of room for storage. Three rows of Enterprise® workstations elongate the room while creating functional workspaces with shelving above and power access built-in. Grey epoxy Kemresin® tops provide a durable, heat and chemical-resistant surface area to tie the room together.



SANTA CLARA UNIVERSITY

SANTA CLARA, CA

ISEC INC

Functional and fresh design choices create a true showroom effect in this laboratory space. A customized look is achieved with floor-to-ceiling windows, white paint, nested wood and metal cabinets, and flexible workstations that hold everything you need and more. Snow White Enterprise® workbenches feature grey Kemresin® tops for a heat and chemical-resistant surface and are equipped with built-in power. Combining work tables with butcher-block worktops brings texture and functionality to the forefront. The customization and design come together with a Supreme Air Venturi® fume hood along the wall, providing even more light to the room.



FLORIDA GULF COAST UNIVERSITY

FORT MYERS, FL

NYCOM INC

Rows of flexible shelving systems maintain a line of sight across this expansive lab space. Signature Series full-overlay style wood cabinets topped with slate Kemresin® epoxy work surfaces and sinks invite ample space for experimentation while a full wall of Supreme Air Venturi® fume hoods stands ready to host their next discovery.





BOSTON UNIVERSITY

BOSTON, MA

LAB FURNITURE INSTALLATIONS AND SALES

Unique texture and color combinations add interest and a dash of school spirit to this laboratory space. Research Collection steel mobile cabinets nest under back-to-back table islands to provide ample space for study and research. A Kemresin® epoxy sink, stainless steel pegboard drying rack, and shelving add to the function and capabilities of this lab space.





FLORIDA MUSEUM OF NATURAL HISTORY

GAINESVILLE, FL

NYCOM INC

Crisp lines and finished concrete add character and intrigue to this functional laboratory space. A Supreme Air Venturi® hood is paired with ample wall-mounted shelving, Research Collection steel casework in Snow White, and black Kemresin® epoxy work surfaces.

Q² SOLUTIONS

DURHAM, NC

NYCOM INC

Ceiling service panels support row after row of adjustable BasicBench® systems. Storage is never an issue with these sleek workbenches. Mobile full-overlay, metal cabinets add to the adaptability of the space while providing pops of color throughout.





CARTER MACHINERY

SALEM, VA

NYCOM INC

Multiple individual workstations combine to add flexible options to this laboratory space, including custom colors to match branding. Evolution® workstations can easily be placed on smooth and sturdy casters to make work areas mobile. Steel casework is used to maximize individual and shared storage needs throughout the lab. Black Kemresin® epoxy work surfaces provide durable workstations that are built to last. Branded colors throughout give the lab a unique and cohesive feel.

NATIONAL CANCER INSTITUTE

BETHESDA, MD

ISEC INC



Strategic color-blocking and expansive sight lines open and brighten this space. Alpha® adaptable casework systems paired with Research Collection full-overlay steel casework provide ample storage with space to work and collaborate. Black Kemresin® sinks and work surfaces mix style with durability to ensure this lab remains showroom ready through the toughest experiments. Colorful bench-mounted Supreme Air Venturi® fume hoods with ceiling enclosures provide opportunities for experimentation and innovation.



SOKA UNIVERSITY

ALISO VIEJO, CALIFORNIA

ISEC INC

Warmth and color are key in this STEM expansion project. SOKA University's new interdisciplinary teaching and research building services their Physics, Biology, and Chemistry programs. Students enjoy ample workspaces and storage through a mixture of adaptable storage systems, Supreme Air Venturi® fume hoods and Signature Series wood casework.







CALIFORNIA STATE UNIVERSITY

EAST BAY STEM BUILDING
HAYWARD, CA

ISEC INC

This new STEM lab supports students as they move through their introductory science classes. Adaptable storage systems with chemical and scratch-resistant epoxy work surfaces are built to withstand the most stringent usage requirements. Flexible Enterprise® systems allow learning and support classroom spaces that are built to function like team offices, allowing students dedicated space for their work and for team collaboration.

UNIVERSITY OF CALIFORNIA RIVERSIDE

RESEARCH BUILDING

RIVERSIDE, CA

ISEC INC

This new construction Multidisciplinary Research Building provides wet and dry laboratories, core support facilities, a vivarium, and space for faculty and academics. The laboratory space is set up with multiple rows of adaptable storage and Enterprise® movable workstations to support a variety of scientific disciplines engaged in collaborative research at the intersection of biosciences, medicine, and engineering. A combination of fixed and mobile Research Collection wood casework ensures that the space can facilitate whatever research or experimentation is required.





UNIVERSITY OF NORTH TEXAS

HEALTH SCIENCE CENTER

FORT WORTH, TX

HALLMARK CASEWORK

A combination of stainless steel and wood-on-steel casework provides storage and organization for this bustling laboratory space. Ceiling service panels connect with adjustable pre-wired Alpha® systems to keep wiring organized and preserve work and storage areas.



TEXAS A&M UNIVERSITY

ENGINEERING EDUCATION COMPLEX

COLLEGE STATION, TX

HALLMARK CASEWORK

Floor-to-ceiling glass with glossy floors and slate Kemresin® epoxy work surfaces ensure this space shines. Ceiling service panels paired with adjustable pre-wired Alpha® systems organize wiring and maintain sight lines across the space.



UNITED TECHNOLOGIES RESEARCH CENTER

FARMINGTON, CT

LAB FURNITURE INSTALLATIONS AND SALES

Enterprise® workstations come equipped with power outlets and sturdy Kemresin® epoxy worktops that are heat and chemical resistant. This laboratory space gives a modern feel with white and grey color schemes that help brighten up the room, and the unique wood-on-steel casework design brings additional texture to the forefront of the aesthetic.



OHIO UNIVERSITY

ATHENS, OH

SUPERIOR LABORATORY SYSTEMS

Signature Series full-overlay wood casework, tall cabinets, and mobile cabinets allow for maximum storage potential. Additionally, mounted shelves allow for more storage areas throughout the space. Black Kemresin® epoxy work surfaces add to the neutral color palette. These color choices create a warm and professional feel to catalyze these students' next discovery.





FLORIDA GATEWAY COLLEGE

LAKE CITY, FL
NYCOM INC

This classroom incorporates Kewaunee's Signature Series steel casework, full-overlay style cabinets. Students have the option to work at fixed height student work stations with Kemresin® epoxy work surfaces and drop-in sinks or Supreme Air Venturi® fume hoods.



FUJI VIC

DIOSYNTH BIOTECHNOLOGIES

COLLEGE STATION, TX

HALLMARK CASEWORK

Kemresin® work surfaces are paired with inset Signature Series metal casework in Snow White to reflect and amplify available light, creating a bright, modern laboratory space. Both island and wall-mounted flexible Alpha® and Evolution® systems provide a variety of work areas, bringing design and functionality together to maximize available space. Using electronic height adjustable Evolution Adjustabench® systems allow any user to work comfortably regardless of their stature or the size of the equipment they may be using.





FLEXTEM

URUGUAY

TEKSOL

Signature series inset steel cabinets topped with black and grey Kemresin® epoxy worktops create a functional space. Epoxy sinks and stainless steel drying racks, as well as counter-mounted shelving allow for flexibility of storage during research.





COSTA ORIENTAL

URUGUAY

TEKSOL

Interior windows line the wall of this compact, but highly-optimized laboratory space. Black Kemresin® epoxy worktops provide durable workspaces on top of inset steel casework. Against one wall, a Supreme Air® fume hood stands ready for its next discovery.

KEWAUNEE INTERNATIONAL OPERATIONS

ONE-STOP SOLUTION FOR ALL YOUR LABORATORY DESIGN AND CONSTRUCTION PROJECTS.

High quality infrastructure and solutions for your Global laboratories construction needs

Kewaunee, the global leader in total laboratory solutions, empowers organizations to achieve their competitive advantage through safe, efficient, and contemporary laboratories. Operating since 1906, Kewaunee powers the laboratories for over 5,000 customers in more than 100 countries.

Building laboratories of the same high grade across your global footprint can be a difficult task, but the process is made simple through the Kewaunee International team's ability to provide turn-key solutions that take your design from thought to finish. This unique set of capabilities ensures your project is completed successfully, on-time, and within-budget with the best in safety and quality.

Design, Build & Engineering

Kewaunee's unique approach provides building expertise from the start of your planning process through every phase to follow. This approach delivers a substantial reduction in re-design efforts and costs.

As a one-shop partner, Kewaunee's turn-key services offer a hassle-free and risk-mitigated lab project for you.

- Engineering, procurement and construction (EPC)
- HVAC, exhaust, gas distribution, electrical, fire protection, lab effluent & plumbing systems
- Internal fit-out, Brown & Green field projects
- Fast-track & quick-ship programs
- Real time project management services



Commission & Support

Commissioning a new lab can bring unexpected challenges beyond just the build phase. When thousands of variables are at play, one unexpected interruption can cause delays and the need to re-work. Kewaunee's approach keeps the end-state in mind through every phase, so you can proceed with ease.

- Laboratory validations as per CGLP/ CGMP guidelines
- Certifications, audits, and compliances
- Documentations & checklists
- Health & safety guidelines
- Spare parts management
- Kewaunee IoT solution to monitor & manage labs



WORLD CLASS TECHNICAL FURNITURE WITH FULL SERVICE



TURN KEY SOLUTION

INDIA

KEWAUNEE INTERNATIONAL OPERATIONS



TURN KEY SOLUTION

CHENNAI, INDIA

KEWAUNEE INTERNATIONAL OPERATIONS



ETP SYSTEM



EXHAUST SYSTEM



HVAC SYSTEM



ELECTRICAL SYSTEM

Avoid delays, cost overrun, and mediocre quality of execution.

The solution: Kewaunee's International Operations

Establish your world-class lab with innovative services and support from thought to finish.

HERBALIFE

BANGALORE, INDIA

KEWAUNEE LABWAY INDIA

Who said labs can't be exciting? Vivid coloration throughout the space adds a sense of fun and light to the work space, even with limited exterior windows. Outfitted with Alpha® workstations, steel casework, and fume hoods, this lab is set up for functionality. Narrow spaces are made larger with open sight lines and efficient layouts. Interior windows and fume hoods help to add additional light and keep the space feeling open.





ADAMA

INDIA

KEWAUNEE LABWAY INDIA

Utilizing specific zones of color has allowed this lab to incorporate color without overpowering the entire space. The front panels of Supreme Air Venturi® fume hoods as well as a top row of draw faces were custom painted while the remainder of the casework remained white. Research Collection steel casework form and island between banks of Supreme Air Venturi® fume hoods and border the room under windows that allow plenty of natural light to enter the space.

PFIZER

CHENNAI, INDIA

KEWAUNEE LABWAY INDIA

Colorful steel cabinets set under Supreme Air Venturi® fume hoods provides ample brightness to this indoor space. A large island topped with a durable and sleek Kemresin® epoxy work surface stands ready to support and catalyze this lab's next discovery.





HIMEDIA

THANE, INDIA

KEWAUNEE LABWAY INDIA

Dramatic pops of color combine with sleek lines of the Supreme Air Venturi® fume hood to make this space stand out. Evolution® systems provide storage and individual work areas that combine aesthetic design and durable functionality to enhance the utility of the space further.

KEMRESIN[®] EPOXY RESIN



GREY



BLACK



PUTTY



SLATE

EPOXY RESIN:

Ultra-smooth surface for enhanced

- >> Scratch resistance
- >> Chemical resistance
- >> Nonporous properties
- >> 1" and molded epoxy resin

FABRICATION

- >> Flat Sheets
- >> Marine Edge
- >> Octagonal
- >> Under-mount, drop-in, and ADA sinks
- >> Sinks in many sizes
- >> Drains

METAL COLORS



12
Black



463
Iron Ore



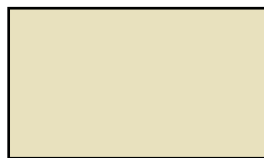
242
Flint Grey



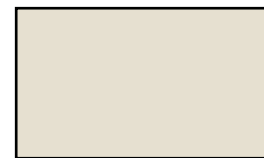
85
Satin Grey



94
True Blue



20
Sand Tan



61
Light Neutral



78
Snow White



103
Smokey Blue



90
Amazon



102
Agave



91
Sage



87
Mountain Blue



62
Driftwood



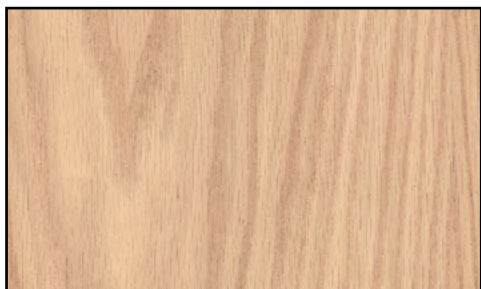
97
Invigorate



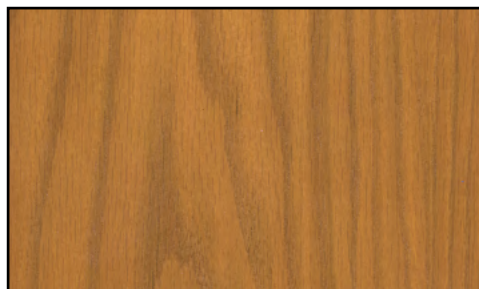
99
Rapture Red

WOOD COLORS

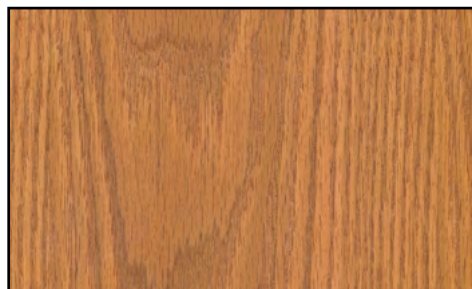
RED OAK VENEERS



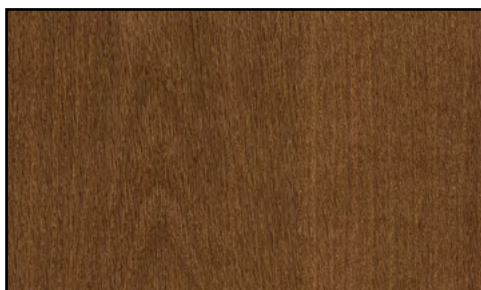
102
Seaside Oak



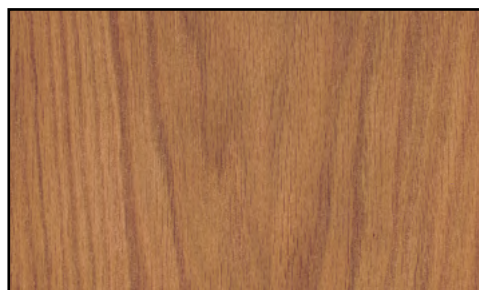
103
Sherwood Oak



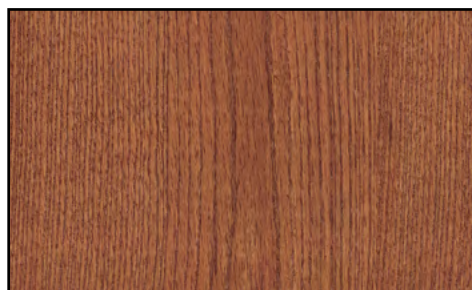
104
Woodland Oak



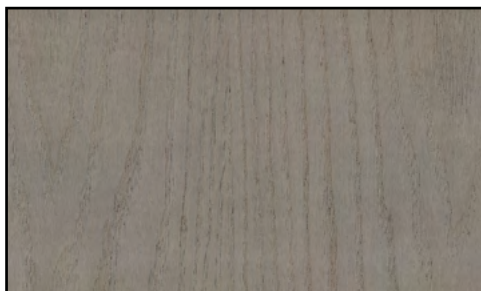
108
Winchester Oak



109
Chicory Oak



110
Carolina Oak



111
Barnwood Oak



WOOD COLORS

WHITE MAPLE VENEERS



201
Natural Maple



202
Seaside Maple

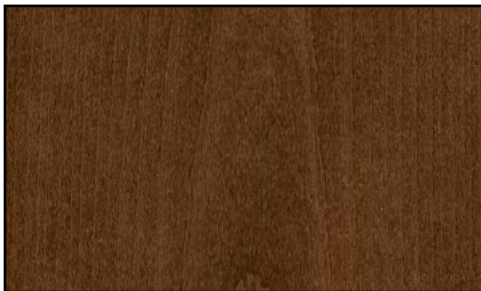


204
Woodland Maple

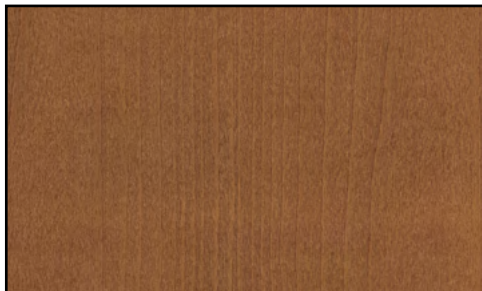


209
Chicory Maple

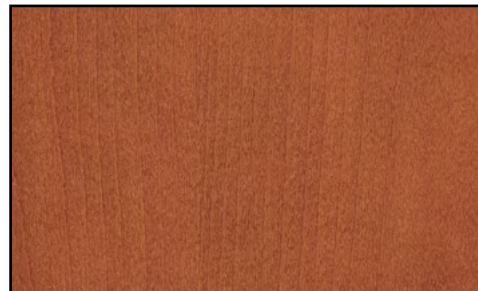
STEAMED BEECH VENEERS



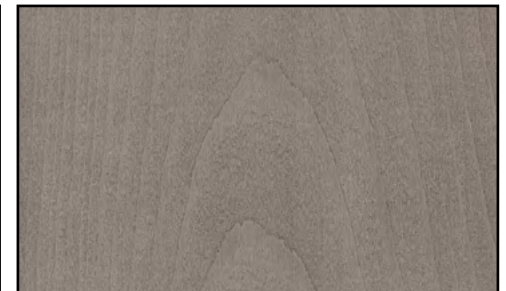
608
Winchester Beech



609
Chicory Beech



610
Carolina Beech



611
Barnwood Beech

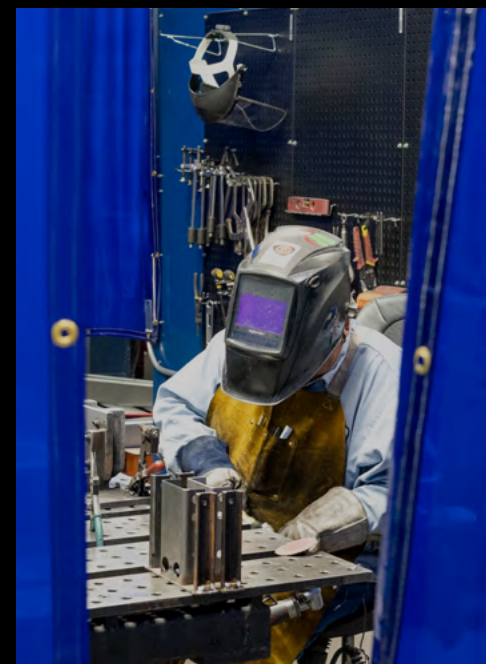
ABOUT KEWAUNEE

Kewaunee laboratory furniture was built to catalyze the next big discovery.

A North Carolina based company founded in 1906, Kewaunee's history of quality products and scientific expertise positions it as a recognized global leader in the design, manufacture, and installation of laboratory, healthcare, and technical furniture products. Products include steel and wood casework fume hoods, adaptable modular systems, movable workstations, stand-alone benches, and epoxy resin work surfaces and sinks. Kewaunee's corporate headquarters are located in Statesville, North Carolina.



STATESVILLE, NC



FROM START TO FINISH

The partnership between Kewaunee and its laboratory furniture dealers provide total laboratory solutions from start to finish. Whether your project is a brand new multi-story research center or the remodel of an existing lab, you are provided the full range of services from design and engineering to the final installation and start-up.



Visit www.kewaunee.com to find a representative near you.

- | | |
|----------------|-----------------------|
| >> Design | >> Certification |
| >> Engineering | >> Project management |
| >> Fabrication | >> Installation |
| >> Testing | >> Commissioning |

