

# Supreme Air Venturi Fume Hood V11F 28...

General Purpose Bench Hood with Split Combination Vertical Rising/Horizontal Sash

(indicate fittings/fixtures required)  
(hole plugged if no fitting specified)

[Option K - Fan/Blower Switch]

Light/Sash Stop Controller

[Water]

[Option P1 - Cord Port]

120VAC GFCI Double Duplex

**Pre-piping:** (pick one if required)

- IN** Installed (no piping)
- PU** Pre-piped Up
- PD** Pre-piped Down
- SP** Pre-piped Single Point
  - Up - Left Side
  - Up - Right Side

(indicate fittings/fixtures required)  
(hole plugged if no fitting specified)

[Option A2/A3 Alarm]

Light/Sash Stop Controller

[Water]

[Option P1 - Cord Port]

120VAC GFCI Double Duplex

**Receptacles:** (pick one)

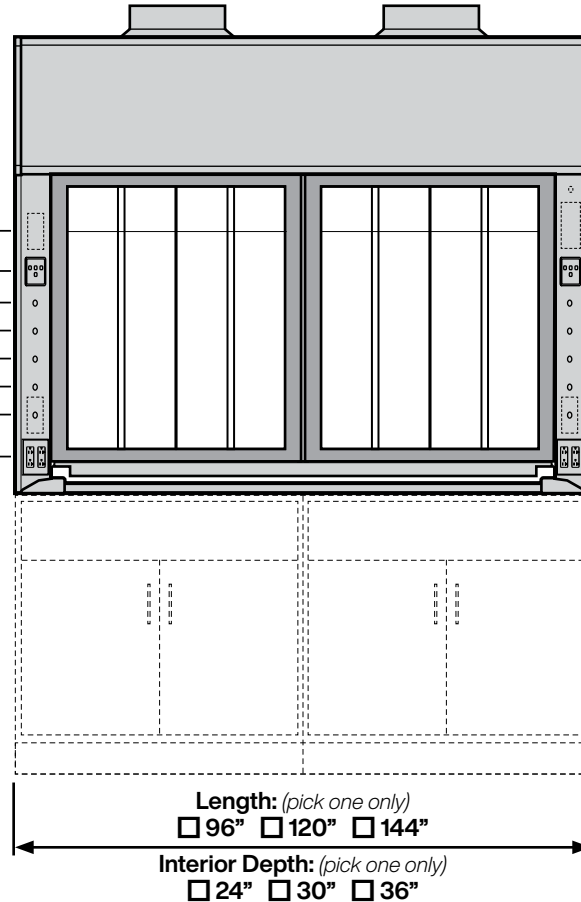
- S** Spec. Grade GFCI
- H** Hospital Grade GFCI

**Receptacle Color:** (pick one)

- K** Black
- W** White
- R** Red
- V** Ivory
- G** Grey

**Wiring:** (pick if required)

- U** Pre-wired - Top of Hood



**Required Options:** (pick from each group)

- Interior Liner Material** (pick one)
- G** Kemglass (Fiberglass Reinforced Polyester)
  - L** Type 316L Stainless Steel
  - S** Type 304L Stainless Steel
  - T** Phenolic Resin

**Sash Frame** (pick one)

- M** Powder Coated Steel Frame
- S** Type 304L Stainless Steel Frame

**Sash Glass** (pick one)

- G1** Laminated Safety Glass
- G2** Tempered Safety Glass
- G3** Polycarbonate

**Service Fitting Valve Type** (pick one)

- F1** Rod Control Needle Valves
- F3** Front Load Needle Valves

- V** Modified By-pass for VAV Control System

VAV Controller Manf:

Model:

Minimum CFM:

**Add-on Options:** (pick all required)

- A2** Air Alert 600 Alarm
- A3** Air Alert 300 Alarm
- L** Sash Stop Label

- D** Distillation Rack - Preparation
- E** Fire Suppression System

- T** Tissue Screen
- P1** Cord Ports - one in each post

- B1** Vapor Proof Light
- B2** Explosion Proof Light
- K** Fan/Blower Switch - (1 hp motor rated)

- O** Stainless Steel Airfoil - Type 304L
- O2** Stainless Steel Airfoil - Type 316L
- Q** Stainless Steel Sash Pulls
- C** Stainless Steel Duct Collar

- R3** Proximity Sash Operator

<b>V11F</b>	Sash Height	Inside Depth	Overall Length	Hood Liner	Sash Frame	Sash Glass	Service Fittings	Electrical Fixtures	Add-on Options (separated by commas)	COLOR	ITEM NO.	QUANTITY
	<b>28</b>											

# Technical Information

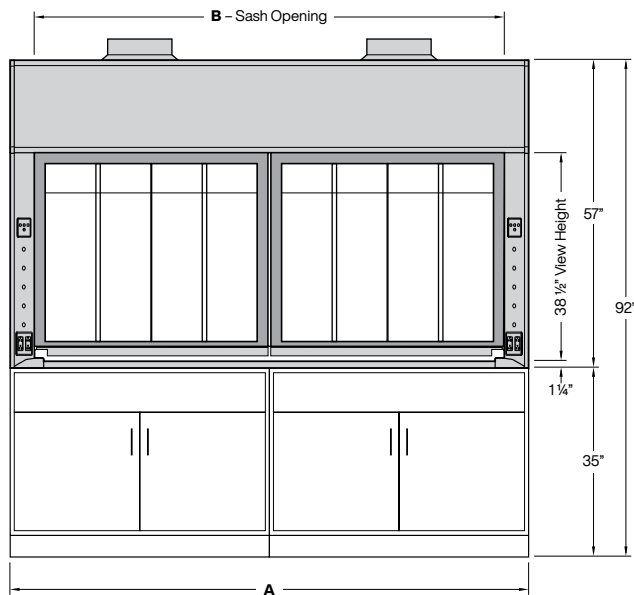
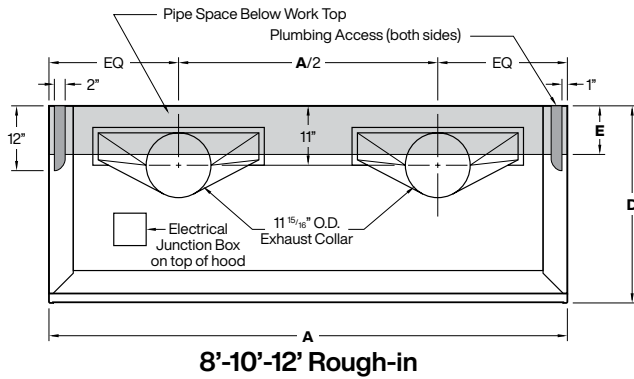
# V11F 28...

## Airflow (CFM) Requirements

Face Velocity	18" High Sash Opening						Sash Closed - Panels Full Open					
	8' / 96"		10' / 120"		12' / 144"		8' / 96"		10' / 120"		12' / 144"	
	CFM	SP	CFM	SP	CFM	SP	CFM	SP	CFM	SP	CFM	SP
100 FPM	1118	0.16	1427	0.21	1735	0.26	954	0.12	1240	0.16	1526	0.21
80 FPM	895	0.11	1141	0.14	1388	0.17	763	0.08	992	0.10	1221	0.13
60 FPM	671	0.06	856	0.08	1041	0.10	573	0.05	744	0.06	916	0.08
50 FPM	559	0.04	714	0.06	868	0.07	477	0.03	620	0.04	763	0.06

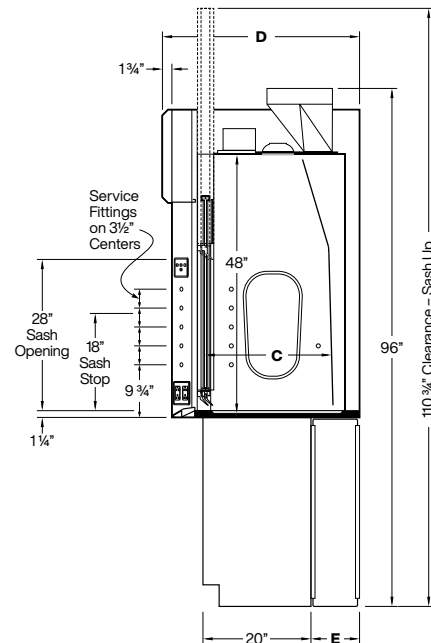
Static pressures shown are for the pressure drop through the hoods only. The total pressure drop through the hood and the duct system must be calculated to select the proper exhaust fan.

Inside Depth	ANSI Z9.5 Minimum Flow Rate Flow Rate					
	150 Air Changes/Hour			375 Air Changes/Hour		
	8' / 96"	10' / 120"	12' / 144"	8' / 96"	10' / 120"	12' / 144"
24" deep	170 CFM	210 CFM	260 CFM	410 CFM	520 CFM	630 CFM
30" deep	200 CFM	260 CFM	310 CFM	500 CFM	630 CFM	770 CFM
36" deep	240 CFM	300 CFM	370 CFM	590 CFM	750 CFM	910 CFM



Elevation

Dimensions - Length			
A	96"	120"	144"
B	87"	111"	135"



Vertical Section

Dimensions - Depth			
C	24"	30"	36"
D	36 1/2"	42 1/2"	48 1/2"
E	9"	15"	21"