

# Installation Instructions

---

# Supreme Air ISOTOPE FUME HOOD with Vertical Rising Sash

# H20

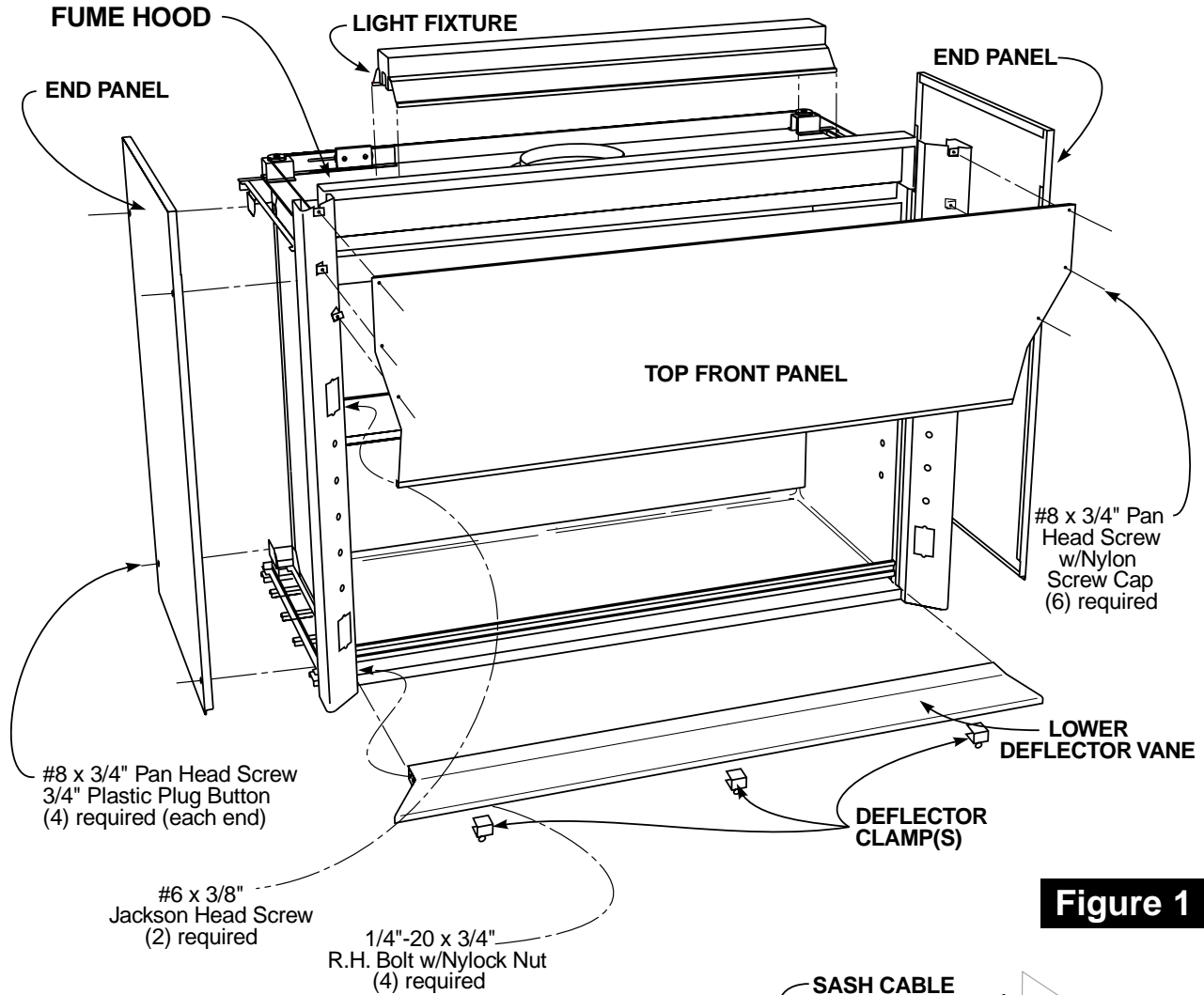
S T Y L E

## Fume Hoods

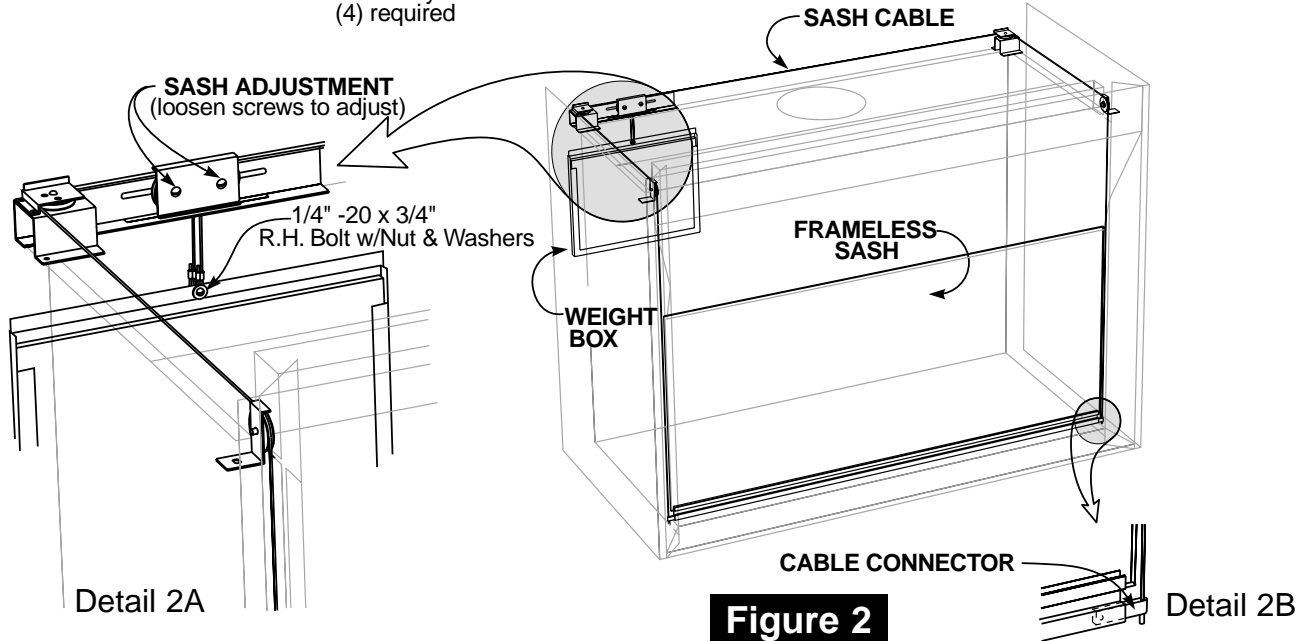
48" - 60" - 72" - 96" long

# Supreme Air Bench Hood

## Isotope Fume Hood w/Vertical Rising Sash



**Figure 1**



**Figure 2**

# Supreme Air Bench Hood

## Isotope Fume Hood w/Vertical Rising Sash

### Packing List

On Pallet	Hardware Package
Fume Hood	(10) Nylon Screw Caps (EXTRAS)
Sash Weight Box	(10) 3/4" Plastic Plug Buttons (2 EXTRAS)
Hardware Package	(3) Deflector Clamps

### Preparation

- Place, level, and install the **Base Unit Assembly** that will support the **Fume Hood** as shown on page 4.

**NOTICE** Base Unit Assembly must be level. Shim beneath as needed.

- Uncrate **Fume Hood** taking care to sort and inventory all parts.
- Remove **End Panels** from **Fume Hood** and remove screws holding **Fume Hood** and **Weight Box** to pallet. (Save End Panel screws to reattach End Panel later.)
- Remove all packing from **Fume Hood** and any tape holding parts in place for shipping.

**NOTICE** Fume Hood is packed fully assembled except for Weight Box. The Light Fixture, Top Front Panel, and Lower Deflector Vane may be removed to fit through narrow doorways and/or for easier access.

**NOTICE** Generally electrical fixtures and plumbing fittings are shipped installed, but may be shipped loose depending on job requirements. Fittings may also be pre-wired and/or pre-piped. Fixtures are not shown on assembly diagram as quantities and locations vary to meet individual requirements.

### Installation

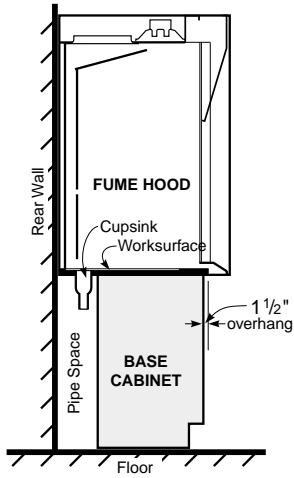
- Check that **Sash Cables** are properly routed over front pulleys, around rear pulleys, and through the **Sash Adjustment** pulleys. (see Figure 2)
- Attach **Weight Box** to cables using one (1) 1/4" -20 x 3/4" R.H. Bolt, Nylock Nut, and two (2) Flat Washers (bolt, nut, and washer shipped attached to cable ends)
- Loosen **Sash Adjustment** pulley bolts and slide pulleys as needed to level sash. Re-tighten when adjusted.
 

**CAUTION** Handle Frameless Sash with care - Laminated Safety Glass will crack if abused.
- Using as many workers as needed, lift assembled **Fume Hood** and place on leveled **Base Unit Assembly**. Make sure hood is pushed back as far as possible and centered side-to-side on **Base Unit Assembly**.
- Attach the spacer tabs on the bottom of the **Lower Deflector Vane** to the **Worksurface** using the **Deflector Clamps**.
- Coordinate connections of service fittings, electrical fixtures, and ductwork with the respective trades (i.e. mechanical, electrical, HVAC). After connections are complete, replace the exterior **End Panels**. Cover screw holes in **End Panels** with 3/4" **Plastic Plug Buttons**.
- Check **Sash** again for level and smooth movement. Adjust as needed.
 

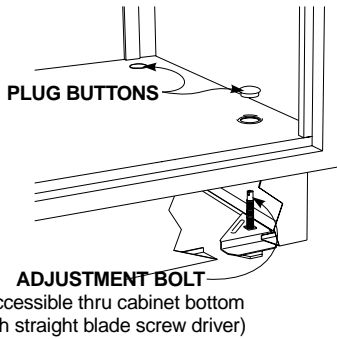
To level, loosen pulley screws on **Sash Adjustment** mechanism and slide pulleys as necessary. (see Detail 2A)  
To adjust **Sash** side-to-side, loosen screws on back of **Sash Handle** and slide the **Cable Connectors** as needed. (see Detail 2B)

**CAUTION** When adjusting side-to-side, make sure sash edges clear the front pulleys.
- Inspect the complete installation, remove any dust, dirt, or other debris. Check all moving parts for proper operation, and adjust or lubricate as necessary.

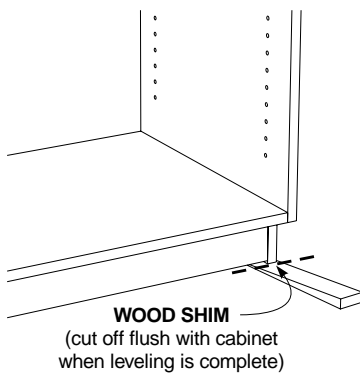
# Base Unit Assembly for Bench Type Fume Hoods



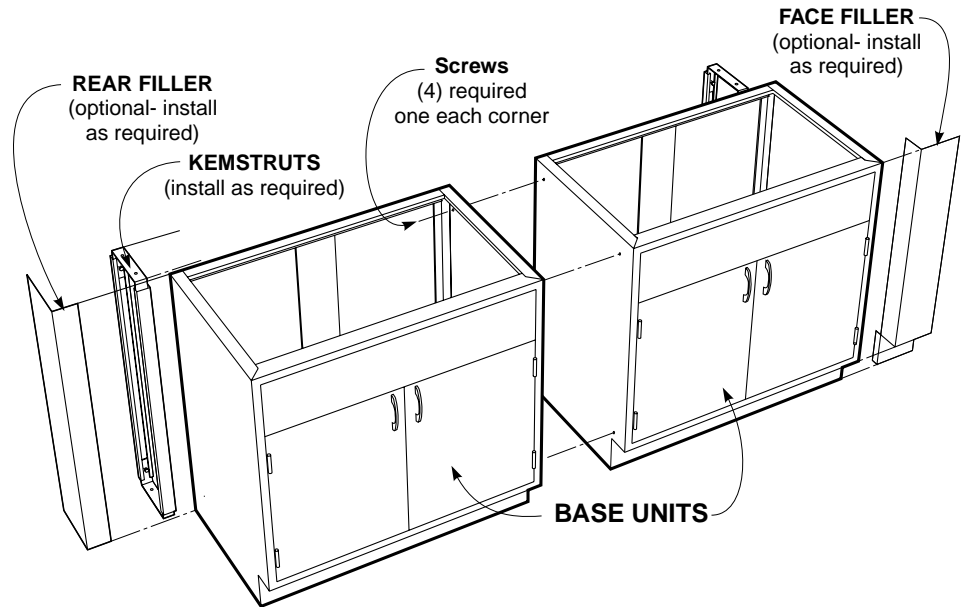
Detail 1  
Fume Hood Base Cabinet  
Location



Detail 2S  
Steel base cabinets are leveled using the adjustment bolts located in the cabinet base.



Detail 2W  
Wood base cabinets are leveled using wooden shims, available at any lumber yard or home center.



## Preparation

1. Locate and mark hood and base cabinet locations making sure area is clear of obstructions and debris. Be sure all conduit, duct work and service lines have been run and are ready for final connections.

**NOTICE** Kemstruts and other pipe or worksurface supports should be installed before the base cabinets are moved into place.

2. Locate the high point of the floor within the area that the base cabinets will be installed.

## Installation

3. Starting with the base cabinet on the highest point on the floor, move the first cabinet into location. Make sure the back of the cabinet is located 8" from the rear wall, as shown in Detail 1 above, and in proper relationship to adjacent walls or equipment as shown on job drawings and floor plans.

4. Using a four foot carpenters level, level the cabinet; side-to-side, front-to-back, and diagonally. (see Detail 2S and 2W to the left for leveling methods)

**NOTICE** Blocks or cleats may be used to fasten cabinets to floor or walls to insure cabinets don't move during installation.

5. Move the next cabinet into position and clamp it to the first cabinet, making sure that the cabinet faces and tops are flush.
6. Level the cabinet, as in step 4.
7. Using four (4) screws, as listed below, fasten the two cabinets together at all four corners of the end panels.  
Use #8 x 1-1/4" Flat Head screws for wood cabinets.  
Use #8 x 1/2" Truss Head Sheet Metal screws for steel cabinets.  
(pilot holes must be drilled in the steel cabinets before driving screws)

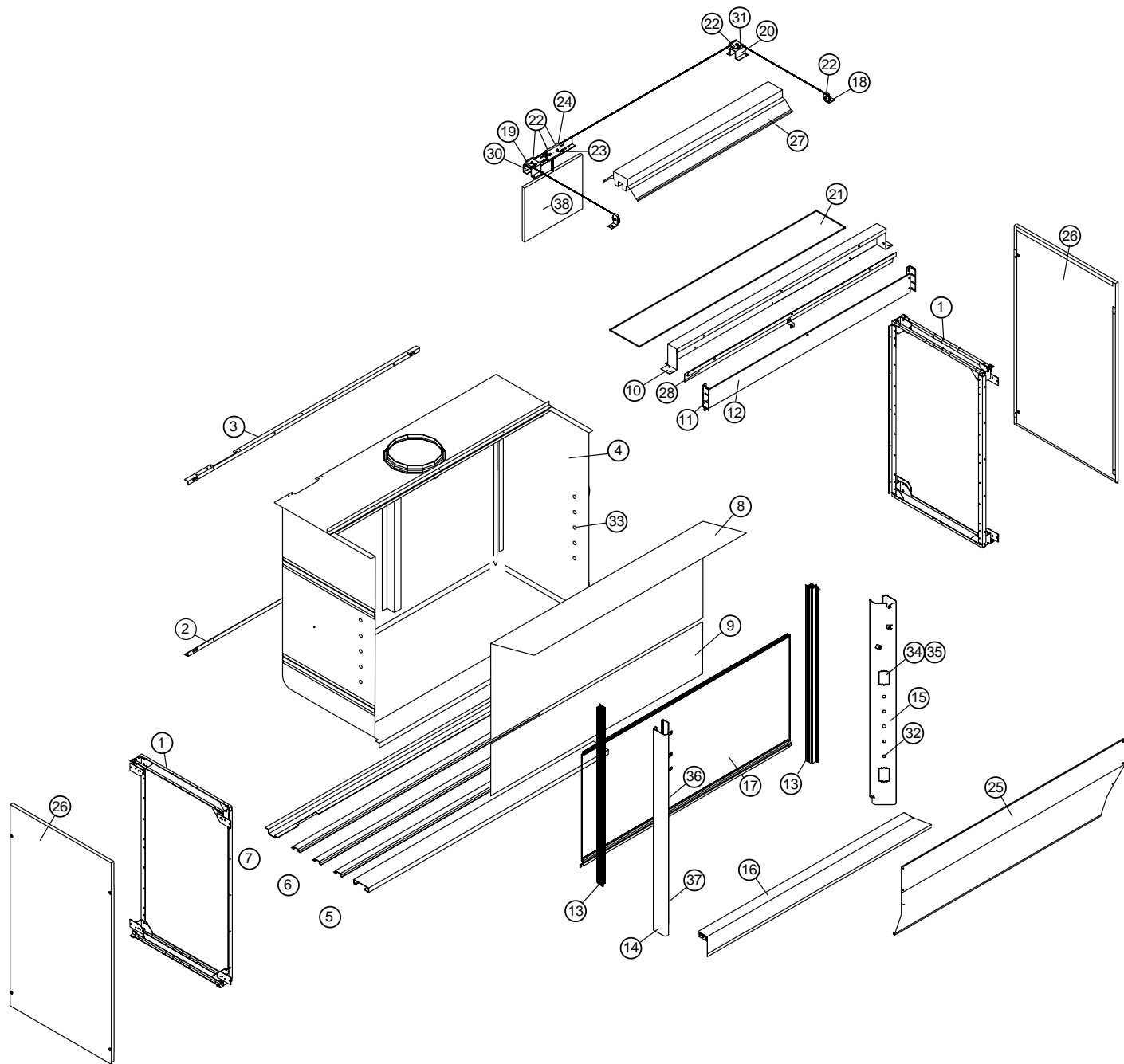
8. Complete hood installation and all mechanical connections before installing any required fillers or scribes.

**NOTICE** It is recommended that the polyethylene liner be removed from Acid Storage cabinets during installation to allow fastening to adjacent cabinets and ease plumbing connections. Be sure to replace when installation is complete.

# Supreme Air Bench Hood

## Isotope Fume Hood w/Vertical Rising Sash

### NOTES:



PRT	QTY	DESCRIPTION
38	1	SASH WEIGHT ASSEMBLY
37	2	DUPLEX RECEPTACLE
36	1	LIGHT SWITCH
35	1	FACE PLATE MOUNTING STRAP
34	1	BLANK FACE PLATE, ST/STEEL
43	18	3/4" DIA. HOLE PLUG BUTTONS
32	10	1-1/4" HOLE PLUG BUTTONS
31	1	RIGHT REAR CABLE RETAINER
30	1	LEFT REAR CABLE RETAINER
29	1	BYPASS BLOCK SUPPORT ANGLE
28	1	FUME RETAINER
27	1	LIGHT
26	2	END PANEL
25	1	FRONT PANEL ASSEMBLY
24	1	SASH ADJUSTMENT PLATE
23	1	SASH ADJUSTMENT BRACKET
22	8	2" DIA. PULLEY
21	1	LIGHT GLASS
20	1	RIGHT REAR PULLEY BRACKET
19	1	LEFT REAR PULLEY BRACKET
18	2	FRONT PULLEY BRACKET
17	1	SASH ASSEMBLY
16	1	DEFLECTOR VANE WELDMENT
15	1	RIGHT FACIA
14	1	LEFT FACIA
13	2	SASH TRACK ASSEMBLY
12	1	BYPASS BLOCK OFF PANEL
11	2	BYPASS BLOCK PANEL ANGLE
10	1	BYPASS PANEL
9	1	LOWER REMOVABLE BAFFLE
8	1	UPPER REMOVABLE BAFFLE
7	1	REAR WORKTOP REINFORCEMENT
6	3	CENTER WORKTOP REINFORCEMENT
5	1	FRONT WORKTOP REINFORCEMENT
4	1	ISOTOPE WRAPAROUND WELDMENT
3	1	TOP BACK LINER ANGLE
2	1	BOTTOM BACK LINER ANGLE
1	2	END FRAME WELDMENT

## H2O Fume Hood - Parts Listing